



**Economic
Development**



ECONOMIC DEVELOPMENT NEWS

»» NEWSLETTER ««



NEW! MMF ACQUIRES THREE PRIME DOWNTOWN PROPERTIES

»» **DRIVING GROWTH: EXPANDING COMMERCIAL PROPERTIES FOR
ECONOMIC DEVELOPMENT SUCCESS**
DELIVERED BY MMF ECONOMIC DEVELOPMENT

The Lands and Properties division of Economic Development collaborates with MMF Departments, Affiliates, and other partners to coordinate and support the planning, acquisition, development, and management of lands and properties owned and operated by the Manitoba Métis Federation (MMF), its Regions, and Affiliates.

This portfolio includes a growing number of commercial properties that contribute to ongoing economic development and growth in alignment with MMF priorities.

Most recently, President David Chartrand announced the acquisition of three downtown properties in Winnipeg, including the 24-storey office building at 333 Main Street, its neighboring 13-storey office building at 191 Pioneer Avenue, and a 99-stall parking lot at 179 Pioneer Avenue. The Lands & Properties department worked closely with LRCC's Property Management division and others to complete the acquisition assessment and due diligence of the properties.

**THE MMF LOOKS FORWARD TO
WELCOMING NEW AND EXISTING
TENANTS TO THE BUILDINGS
FOLLOWING THE POSSESSION DATE
OF OCTOBER 1, 2024.**

JOIN US! ON AIR AND ONLINE

FOR ALL THE LATEST RED RIVER MÉTIS NEWS AND EVENTS

STAY CONNECTED

WITH YOUR NATIONAL GOVERNMENT
OF THE RED RIVER MÉTIS



on social media

- @ManitobaMetisFederation
- @MBMetis_MMF
- @ManitobaMetisMMF
- @MB_MMF
- @ManitobaMetisFederationOfficial

in the news

CITIZEN SPOTLIGHT

STORIES HIGHLIGHTING RED RIVER MÉTIS CITIZENS
IN THE COMMUNITY, ALONG WITH MMF PROGRAMS,
INITIATIVES, PROJECTS, AND EVENTS.



MMF SPOTLIGHT

Highlighting MMF programs, initiatives,
projects, and events.



All Citizens welcome –
join our mailing list today!
communications@mmf.mb.ca



Le Métis
EST. 1871

AVAILABLE DIGITALLY THROUGH OUR MAILING LIST!

or on the web

visit mmf.mb.ca



KEEPING YOU INFORMED!

SUBSCRIBE TO OUR MAILING LIST, VISIT MMF.MB.CA, AND SIGN UP TODAY!

TUNE IN SATURDAYS
AT NOON TO LISTEN TO
PRESIDENT CHARTAND ON
METIS HOUR X2
ON NCI FM





RED RIVER MÉTIS BUSINESS DEVELOPMENT CORPORATION

➤➤➤ AN INVESTMENT INTO YOUR FUTURE!

The Red River Métis Business Development Corporation (RRMBDC), an affiliate of the Manitoba Métis Federation, is now delivering the **RED RIVER MÉTIS BUSINESS ASSOCIATION** (RRMBA), which is a new resource that is available to Red River Métis entrepreneurs and businesses.

Members of the Red River Métis Business Association will be able to access essential business services such as **Digital Media Marketing, Bookkeeping, and coming soon - Group Benefits**. Contact us to inquire about special member pricing on these services:

- Digital Marketing Services, contact Erica Fenner at erica.fenner@mmf.mb.ca
- Bookkeeping Services, contact Michelle Syntak at michelle.syntak@mmf.mb.ca
- Group Benefits, contact Carmen Scott at carmen.scott@mmf.mb.ca



For Year 1 of the Red River Métis Business Association, 50% of the membership rate is subsidized by Manitoba Métis Federation.



Why join the RRM BDC Business Association

- Networking with other Métis entrepreneurs
- Programs that support and enhance your business
- Events that feature learning opportunities and networking
- Connectivity and greater ease of access to other Métis business and economic development programs within the MMF and affiliates through the RRM BDC Business Association



Opportunities Available

- Special member pricing for business services
 - Social Media Marketing
 - Bookkeeping
- Member pricing for events and workshops in 2024 & 2025
- 2024 Fall Business Expo
- Lunch & Learn workshops
- Cost-Saving Programs
- Employee Benefits
- Networking Opportunities



Contact Us

www.rrmbdc.ca

shaun.hampton@mmf.mb.ca

204-589-0772 ext. 2242



RED RIVER MÉTIS BUSINESS DEVELOPMENT CORPORATION

➤➤➤ **RED RIVER MÉTIS BUSINESS ASSOCIATION INSIDER: BUSINESS EXPO, LUNCH & LEARN, AND MEMBER BENEFITS**

MMF BUSINESS EXPO

Our next signature event will be the *Red River Métis Business Expo* which will be held **December 3 & 4, 2024** in Winnipeg at the RBC Convention Centre.

The conference will be two days and will be focused on supports and resources for businesses, as well as procurement opportunities. For more information visit our website at rrmbdc.ca or call us at 204-589-0772 ext. 2242. Scan this QR code to stay connected.



OTHER INCENTIVES TO JOIN THE RED RIVER MÉTIS BUSINESS ASSOCIATION

LUNCH & LEARN EVENTS

There will also be four *Lunch & Learn Events* throughout the fiscal year, two of which will be held in rural Manitoba, with the first Lunch & Learn event to be held this fall.

Stay tuned for member spotlights coming soon on the RRM BDC website at rrmbdc.ca.

- Special member pricing for business services
 - Social Media
 - Marketing
 - Bookkeeping; and coming soon
 - Health Benefits
- Access to events and workshops in 2024 & 2025, such as
 - Business Expo
 - Business
 - Excellence Awards
 - Lunch & Learn workshops

RED RIVER MÉTIS BUSINESS DEVELOPMENT CORPORATION

>>> DISCOVER MORE: ACCESS RED RIVER MÉTIS BUSINESS DEVELOPMENT CORPORATION PROGRAMS AND SERVICES TO STAY IN THE KNOW

SCAN AND BE CONNECTED WITH RRM BDC!

Scan the QR Code to unlock full access to everything RRM BDC has to offer.

From our Investment Program and Business Association to comprehensive details on RRM BDC Services, latest news and events, and much more!.

You'll also find our contact information to easily get in touch with us. While there, don't forget to sign up for our mailing list to stay informed on exciting updates, opportunities, and events.

STAY IN THE LOOP AND GROW WITH US!

VISIT OUR NEW WEBSITE
AND FOLLOW US ON
SOCIAL MEDIA FOR
EXCITING DEVELOPMENTS
VISIT US AT
RRMBDC.CA



NEW! RED RIVER MÉTIS ECONOMIC AND COMMUNITY DEVELOPMENT

>>> THE PAS LOCAL HITS A MILESTONE: 49 GARDEN BOXES DELIVERED TO RED RIVER MÉTIS CITIZENS

Métis Economic Community Development is proud to announce a successful collaboration with The Pas Local that brought 49 garden boxes to Red River Métis Citizens in The Pas Region! This initiative was driven by a shared commitment to sustainability, food security, and community well-being.

Thanks to the hard work of local volunteers and partnerships, Citizens are now growing their own fresh produce right in their backyards. These garden boxes not only support healthier lifestyles but also empower our community to reconnect with the land and Red River Métis traditions.

A big thank you to everyone who made this possible!



NEW! MMF'S NEWEST AFFILIATE COMPANY, RAPID CITY MEMORIALS

**>>> HONORING LEGACIES: CUSTOM MEMORIALS AND MONUMENTS
DELIVERED BY THE MANITOBA MÉTIS FEDERATION**

The Manitoba Métis Federation (MMF) is excited to announce the acquisition of Rapid City Memorials (RCM), located in Rapid City, MB.

This trusted and established company specializes in the creation and installation of high-quality custom memorials and monuments.

RCM has served families and surrounding communities in the MMF Southwest MMF and Northwest Regions for over 30 years, providing beautifully crafted headstones, grave markers, and memorials that honour loved ones and significant events.

As part of the MMF's commitment to the well-being of its Citizens, RCM is looking to expand its Red River Métis workforce and is currently hiring.

If you're interested in joining the team, please contact General Manager, Terry Cameron, at terry@rapidcitymemorials.com, and she will be happy to provide more information on the available positions.

RCM
Rapid City Memorials



RED RIVER MÉTIS PERSONAL **Louis Riel** **LOAN PROGRAM** **NEW LIMIT INCREASE!** CAPITAL CORPORATION

>>> UP TO A \$40,000 PERSONAL LOAN!

RED RIVER MÉTIS PERSONAL LOAN PROGRAM - DELIVERED BY LRCC

The purpose of this interest-bearing loan program is to provide financing to Red River Métis Citizens. The loan is intended for the purchase of consumer goods such as vehicles, home renovations, and debt consolidations.

The applicant must meet several basic requirements, in addition to specific conditions that will be identified as the application progresses. Details and the application process can be found on our website at lrcc.mb.ca.

>>> GENERAL ELIGIBILITY

- Individuals employed full-time who have successfully completed any applicable employment probationary period
- Those who repay loans through the Pre-Authorized Debit (PAD) program directly from their bank account
- Applicants with a satisfactory credit score who can explain any judgments and/or collections
- Applicants whose ability to repay the loan is adequately demonstrated through an analysis of current income, debt, and personal expenses
- Individuals able to provide collateral to secure the loan, if required

FOR MORE INFORMATION ON THE RED RIVER MÉTIS PERSONAL LOAN PROGRAM, CONTACT ADAM WISHNOWSKI, PERSONAL LOAN PROGRAM MANAGER, AT ADAM.WISHNOWSKI@LRCC.MB.CA OR CALL 204-589-0772





MÉTIS ENTREPRENEURSHIP MICRO-LOAN INITIATIVE

**>>> SUPPORTING YOUR BUSINESS GROWTH
DELIVERED BY LRCC**

We are thrilled to announce updates to the Red River Métis Entrepreneurship Micro-Loan Initiative, offering three loan programs designed to support micro-businesses—whether you're starting a new venture or expanding an existing one.

Loan amounts have now increased from a maximum of \$25,000 to \$30,000, with 25% of the loan (up to \$5,000) being forgivable. Plus, no personal equity is required, and interest rates are fixed to provide financial stability as you grow your business.

To further strengthen Red River Métis economic development and entrepreneurship, this initiative offers financial and training support, as provided through the MMF Métis Employment & Training, to young entrepreneurs (ages 18-29), small/home-based businesses, and Métis Fishers & Trappers. In addition to commercial loans, applicants can access industry-specific training aimed at enhancing their business acumen for long-term success.

We've also expanded the Red River Métis Commercial Fishers Program to now include Red River Métis Trappers. Whether you're looking to expand your operations or break into the industry for the first time, our team is here to support you every step of the way.

For personalized guidance, contact Christine Breland, Manager of Entrepreneurship Initiatives, at christineb@lrcc.mb.ca or call 204-589-0772, Ext. 2219. Visit our website at lrcc.mb.ca to learn more and apply today!





LRCC GRANT AND LOAN PROGRAM

➤➤➤ SUPPORTING RED RIVER MÉTIS ENTREPRENEURS IN MANITOBA

Louis Riel Capital Corporation (LRCC) provides financing support to Red River Métis entrepreneurs headquartered in Manitoba. Our business grant and loan program is designed to finance start-ups, acquisitions, and expansions.

➤ Key Program Highlights:

- Entrepreneurs must contribute a minimum of 10% of the total project costs
- LRCC grants cover up to 30% of eligible project costs
- A minimum loan must account for 50% of the total project costs

This program offers a comprehensive financial solution to help Red River Métis entrepreneurs build and grow successful businesses.

➤ Wondering When to Apply? The Time is Now!

- We strongly recommend applying 6-8 weeks before you plan to carry out your project, if possible. This will allow sufficient time for your application to be reviewed, conditions to be fulfilled, and grant & loan funds to be disbursed accordingly
- To avoid delays in processing your application, please submit all the documentation listed on the Application Checklist located on the final page of the Business Grant & Loan Application

Note: Delays in receiving required documentation will result in delays in approval and the subsequent disbursement of funds

➤ Eligibility Requirements:

Under the LRCC Grant and Loan Program, LRCC may provide a non-repayable grant generally for the following components:

- The business must be at least 51% Red River Métis-owned and controlled (proof of Citizenship required), and must create full-time employment
- Clients must have a minimum of 10% cash equity of the total project costs
- The business must be headquartered in Manitoba
- the Red River Métis owner must have an integral role in the business and possess skills specific to the industry in which the company operates.

➤ What are the interest rate, amortization, and payments on the loan?

- Every loan is risk-scored based on multiple factors, including credit history, financial performance, security, market risk, personal net worth, debt serviceability, and more
- Rate and payment terms will be finalized upon approval of the loan and communicated at that time



FIRST TIME HOME PURCHASE PROGRAM

>>> DELIVERED BY LRCC ON BEHALF OF THE MMF

>>> THE PROGRAM

Launched in February 2019, the MMF's First Time Home Purchase Program (FTHPP) addresses the housing needs, priorities, and challenges of the Red River Métis, making homeownership a reality for Red River Métis Citizens who have never owned a home before.

The program provides funding for down payments on the purchase of a home, up to a maximum of 5% of the purchase price, with a cap of \$18,000, plus purchase closing costs of 1.5% of the purchase price, up to a cap of \$2,500.

>>> THE RESULTS

To date, 1,756 applications have been received, with 1,551 approved. Of these, 1,094 applications have been funded, and over \$15.213 million has been disbursed. The number of people in homes purchased under the FTHPP is 2,271, including 616 children. Of the 1,094 citizens funded to date, 582 are female and 512 are male.

The total value of homes purchased under the FTHPP is just over \$257.4 million, with a total leveraged mortgage amount of over \$244.5 million. The program has also generated other economic impacts of over \$58.2 million and has created 509 jobs. The FTHPP is considered a leading practice in promoting homeownership and moving Red River Métis Citizens into the middle class and serves as a model for similar programs being established across the country.

>>> FISCAL 24/25

Our fiscal year began on April 1st, 2024. To date, 197 applications have been received, with 169 approved. Of these, 118 applications have been funded, and over \$1.852 million has been disbursed. The number of people in homes purchased under the FTHPP is 236, including 57 children. Of the 118 Citizens funded, 60 are female and 58 are male.

The total value of homes purchased under the FTHPP is over \$32 million, with total mortgages leveraged amounting to over \$30.5 million. The program has also generated other economic impacts of over \$6.3 million and has created 88 jobs. Additionally, on August 1st, 2024, we celebrated our 1,000th home funded by the program!

There are currently 19 active applications set to fund this new fiscal year, totalling an additional \$283,211.00 in funding!!!



MÉTIS WOMEN ENTREPRENEURSHIP (MWE) PROGRAM

➤➤➤ **A HOLISTIC PROGRAM UNIQUELY TAILORED TO SUPPORT AND EMPOWER RED RIVER MÉTIS WOMEN ENTREPRENEURS THROUGH THEIR ENTREPRENEURIAL JOURNEY**

➤ **MWE Grant & Loan Program**

LRCC provides commercial financing to help Red River Métis women start or expand businesses in Manitoba. This program offers a combination of a grant and loan.

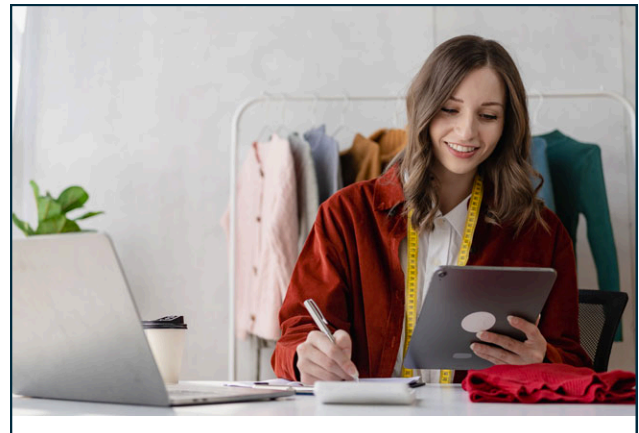
➤ **MWE Grant & Mentorship Program**

Benefit from the guidance and expertise of experienced mentors and industry professionals dedicated to helping you achieve your goals. Mentorships last for a 6-month period, with both the mentor and mentee each receiving a small grant to put toward eligible business expenses.

➤ **MWE Workshops & Networking Events**

Gain valuable insights and connections through our program's diverse array of workshops.

Visit lrcc.ca for more information, announcements, updates, and to connect with us on social media.



**MANITOBA MÉTIS
BUSINESS DIRECTORY
HELPING MÉTIS BUSINESS SUCCEED!**

**VISIT ONLINE-
DIRECTORY.LRCC.MB.CA
FOR MORE INFORMATION AND TO
REGISTER YOUR BUSINESS
TODAY!**

For more information on the MWE program please contact MWE Manager, Natalie Kulczycki, at (204) 589-0772 ext. 2225 or email nataliek@lrcc.mb.ca

NOW OPEN! LAKE MANITOBA RESORT

▶▶▶ LAKE MANITOBA RESORT: OPEN FOR AN UNFORGETTABLE GOLFING SEASON!

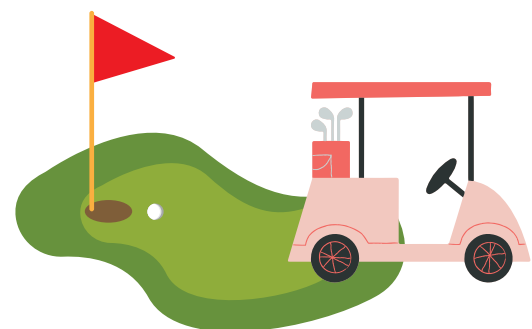
Lake Manitoba Resort is thrilled to announce the opening of its 9-hole golf course for an exhilarating new season. Meticulously maintained to perfection, the course offers a memorable experience for golfers of all skill levels, set against stunning scenic surroundings. Whether you're a seasoned golfer or a beginner, you'll find rounds both enjoyable and challenging.

Our fully stocked pro shop is ready to meet all your golfing needs, from top-quality equipment to stylish apparel. Plus, the resort's clubhouse is now open—offering the perfect retreat to relax and connect with fellow golfers after a satisfying day on the greens.

As Lake Manitoba Resort continues to enhance its offerings, the newly upgraded clubhouse is poised to become a favorite post-game destination for leisure and socializing. With a welcoming atmosphere and exceptional service, it's the ideal spot to unwind and enjoy a drink or a bite to eat, making your visit even more special.

Be sure to stay updated on all the latest news and plan your visit by exploring our website at lakembresort.com or following us on Facebook at [@MMF Lake Manitoba Resort](https://www.facebook.com/MMFLakeManitobaResort).

Special Offer: This season, enjoy a special rate of just **\$30** for a cart and round of golf, and take advantage of **50% off all apparel and accessories** at the pro shop! Get ready for an unforgettable golfing getaway at Lake Manitoba Resort—where every detail is designed for your enjoyment!



LAKE MANITOBA RESORT IS AN INITIATIVE DRIVEN BY THE MANITOBA MÉTIS FEDERATION TO CREATE A FAMILY-FRIENDLY RV PARK, GOLF COURSE, AND COUNTRY CLUB JUST OUTSIDE OF ST. LAURENT, MANITOBA.

RED RIVER MÉTIS TREE NURSERY INC.

➤➤➤ LOCATED IN THE R.M OF ST. ANDREWS, MANITOBA!

BREAKING GROUND: RED RIVER MÉTIS TREE NURSERY CONSTRUCTION BEGINS!

We are thrilled to announce that construction is underway for the new Red River Métis Tree Nursery (RRMTN) in the R.M. of St. Andrews. The first phase of this significant project is set to be completed by 2025, with the facility initially capable of producing up to two million seedlings annually. Once the second phase is complete, production will increase to over 10 million seedlings, reinforcing our commitment to environmental stewardship and community growth.

The RRMTN will produce a variety of species for MMF planting programs, reforestation, wildlife habitat enhancement, and riverbank/watershed area revegetation. The majority of seedlings will be conifers, including White Spruce, Black Spruce, and Jack Pine, used for reforestation after logging and forest fires. Once fully operational, the RRMTN will also produce deciduous species like Maple, Birch, and Ash, as well as food shrubs such as Saskatoons, Canada Plum, Sour Cherry, and Chokecherry.



➤➤➤ **INTRODUCING THE RED RIVER MÉTIS TREE NURSERY AND TRAINING CENTER: A STEP TOWARDS A GREENER FUTURE!**

The RRMTN Office and Training Center will offer programs designed to educate participants on the traditional and sustainable land-use practices of the Red River Métis Citizens. These programs will pass down generational knowledge through traditional teachings, preserving the culture and heritage of the Red River Métis.

The RRMTN will provide economic and cultural opportunities to Red River Métis Citizens and the broader community, including full-time, part-time, and seasonal employment, as well as horticultural training and planting seminars.

**For more information on the
Red River Métis Tree Nursery**

Contact:

**General Manager, James Best,
at james.best@mmf.mb.ca**

RED RIVER MÉTIS ECONOMIC AND COMMUNITY DEVELOPMENT (MECD)

>>> MECD OFFICERS ARE IN THE REGIONS READY TO HELP!

The Métis Economic & Community Development (MECD) team is responsible for implementing distinct economic and community development initiatives for the Red River Métis. The team consists of nine officers—one in each MMF Region, one within the Infinity Women Secretariat, and one specifically for Beyond Borders. MECD is dedicated to supporting Red River Métis business owners and entrepreneurs by advancing their presence, participation, and success across various economic sectors. MECD provides valuable support to Red River Métis business owners and entrepreneurs through networking opportunities, promotional assistance, and guidance in navigating the complexities of business planning and funding applications.

Each MECD officer is designated as a sector lead, responsible for developing a sector-specific strategy that guides the directives within their respective area. These strategies identify opportunities and needs within the Red River Métis community and outline ways to support Red River Métis businesses in establishing, maintaining, or expanding their operations. MECD Officers also serve as points of contact for community partners looking to connect with the Manitoba Métis Federation and Red River Métis Citizens for economic and community development initiatives. They actively engage in building, fostering, and maintaining relationships with Red River Métis Citizens and entrepreneurs, further strengthening the community's ability to collaborate and support their activities.

**FIND YOUR
LOCAL MECD
OFFICER HERE!**

CONTACT INFORMATION FOR MECD OFFICERS:

Jolanda Kroll: Southwest Region, Agriculture Economic Sector lead,
Ph: 204-914-0944 Email: jolanda.kroll@mmf.mb.ca

Kenzie Kallusky: Northwest Region, Forestry Economic Sector lead,
Ph: 204-638-9485 Email: kenzie.kallusky@mmf.mb.ca

Dean Mason: Winnipeg Region, Aerospace and Defense, Manufacturing Economic Sector lead,
Ph: 431-293-9158 Email: dean.mason@mmf.mb.ca

Samantha Law: Southeast Region, Tourism and Hospitality Economic Sector lead,
Ph: 204-754-2721 Email: samantha.law@mmf.mb.ca

Hannah Lahonen: The Pas Region, Mining Economic Sector lead,
Ph: 204-923-0331 Email: hannah.lahonen@mmf.mb.ca

Jocelyne Fournier: Infinity Women Secretariat, Business Navigator,
Email: jocelyne.fournier@mmf.mb.ca



JOIN OUR SOCIAL MEDIA ACCOUNTS!

➤➤➤ TO KEEP UP TO DATE ON ECONOMIC DEVELOPMENT NEWS AND EVENTS

**FOLLOW MMF
ON SOCIAL
MEDIA**



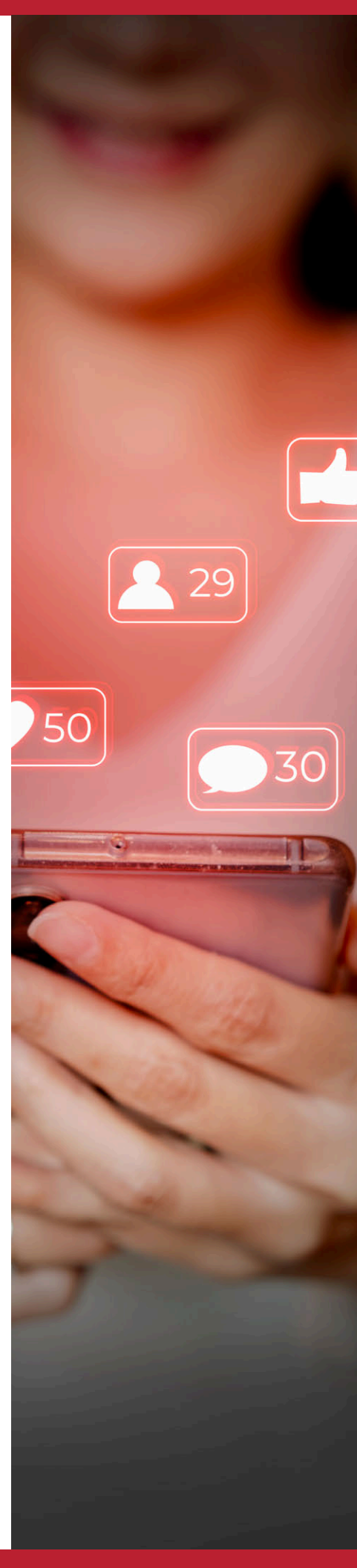
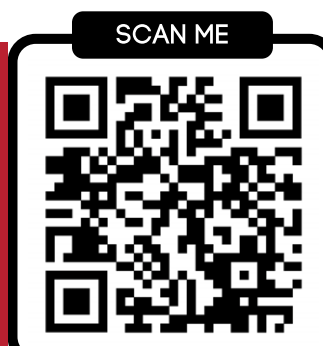
**FOLLOW
RRMBDC ON
SOCIAL MEDIA**



**FOLLOW LRCC
ON SOCIAL
MEDIA**



**FOLLOW LAKE
MB RESORT ON
SOCIAL MEDIA**



MÉTIS GAMES

>>> PUZZLES, PLAY & FUN!

RED RIVER MÉTIS WORDSEARCH

Look for the words listed below.

V	K	B	F	N	J	F	D	J	H	A	R	V	E	S	T	I	N	G	T
D	I	S	M	O	O	S	E	X	F	M	J	G	R	J	V	J	I	J	Y
N	H	D	E	T	B	E	A	D	W	O	R	K	O	T	C	L	S	W	M
X	N	X	X	A	N	G	A	U	F	C	M	I	L	I	E	S	H	Y	N
K	H	Z	F	E	G	S	E	R	L	C	U	S	A	H	K	W	I	Y	P
X	Z	S	U	T	F	U	H	M	F	A	I	C	I	A	E	T	N	C	D
Z	M	U	R	M	F	H	L	E	W	S	H	Q	A	T	A	C	G	C	B
U	N	B	Q	V	V	I	J	L	F	I	S	H	I	N	G	M	P	Z	K
G	G	U	L	Q	F	Y	S	K	S	N	Y	H	Q	P	O	D	S	T	A
Y	U	A	K	N	Z	L	S	H	L	S	S	G	G	Q	M	E	L	A	R
C	P	R	A	I	R	I	E	E	U	I	J	Q	B	G	E	N	E	A	B
F	L	G	B	U	U	L	S	V	G	R	M	E	T	I	S	S	S	N	Z
I	F	V	O	Y	A	G	E	U	R	Y	M	E	T	U	K	J	L	I	P
I	H	A	D	H	S	J	L	V	V	R	C	A	H	L	D	H	E	S	R
Q	Y	S	H	M	H	J	L	T	E	A	I	S	N	E	A	V	E	H	A
S	E	T	T	L	E	M	E	N	T	J	X	M	H	I	V	Y	N	I	D
A	L	R	B	C	O	U	L	M	L	T	C	S	A	R	L	O	Z	O	I
B	P	E	M	M	I	C	A	N	B	M	F	Q	S	E	F	K	C	R	O
H	G	K	T	K	I	F	T	E	D	P	Z	R	W	E	E	Y	A	U	D
A	X	P	V	O	T	B	E	R	R	I	E	S	P	G	E	F	Z	G	Z

Moose
Beadwork
Elk
Prairie

Riel
Métis
Tea
Berries

Taanishi
Fur
Harvesting
Canoe

Settlement
Moccasins
Voyageur
Pemmican
Fishing

WORD UNSCRAMBLE

Red River Métis Edition

Guess what these Red River Métis themed words are by unscrambling the letters.

- NEDLHMAO _____
- NMACOICS _____
- KNABONC _____
- NSOIB _____
- TRAGVNHISIE _____
- RIGFGNOA _____
- LUIROELSI _____
- MNIEPMAC _____
- YITFNINI _____
- TDREARVCRIRE _____
- SHSMITAES _____
- DRSERTRIVEIME _____
- KABREWOD _____



Answer Key

- Homeland
- Moccasins
- Bannock
- Bison
- Harvesting
- Foraging
- Louis Riel
- Pemmican
- Infinity
- Red River Cart
- Metis Sash
- Red River Métis
- Beadwork
- Tea
- Harvesting
- Canoe
- Settlement
- Moccasins
- Voyageur
- Fishing

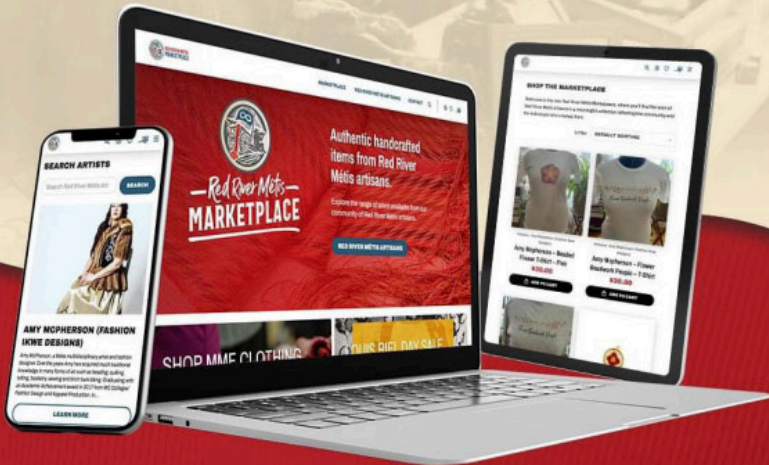
RED RIVER MÉTIS MARKETPLACE

»»» AUTHENTIC HANDCRAFTED ITEMS FROM RED RIVER MÉTIS ARTISANS



—Red River Métis—
MARKETPLACE

Has launched a new online shop!



Red River Métis Marketplace sells authentic handcrafted items from Red River Métis artisans.

REDRIVERMETISMARKETPLACE.CA



—Red River Métis—
MARKETPLACE

Authentic handcrafted items from Red River Métis artisans.

Explore the range of talent available from our community of Red River Métis artisans.

ARE YOU A RED RIVER MÉTIS ARTIST?

Contact Us today to start selling your work.

We are showcasing the unique and incredible talents of our Red River Métis artists, artisans, makers and designers. We give you their stories of how they came to be and why they have taken this journey. Perhaps we will inspire your very own talents as well! We can't wait for you to introduce yourself to us!



Red River Métis Marketplace is the retail division of ESGS Inc., a proud affiliate company of the Manitoba Métis Federation, the National Government of the Red River Métis.

150 Henry Avenue Winnipeg, MB R3B 0J7
(204) 942-7535 Ext 2170

www.redrivermetismarketplace.ca

FOLLOW RED RIVER MÉTIS MARKETPLACE ON



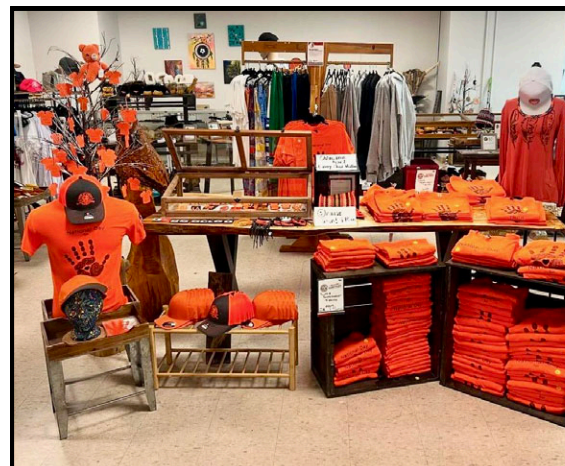
SCAN ME



FOLLOW RED RIVER MÉTIS MARKETPLACE ON



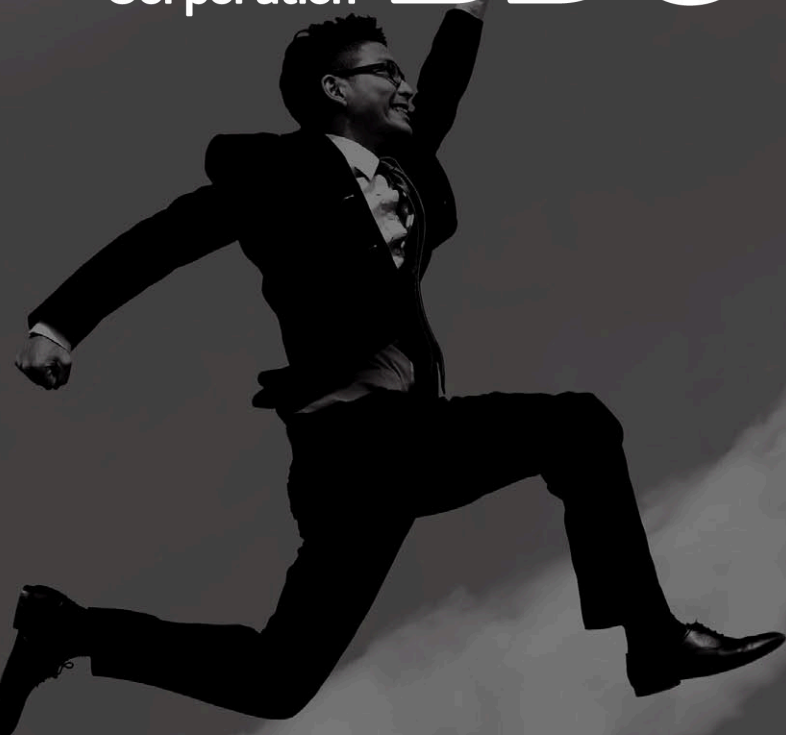
SCAN ME





Red River
Métis Business
Development
Corporation

**RRM
BDC**



An
Investment
Into Your
Future

Marketing | Bookkeeping | Investment | Networking Events

**Learn more about the Red River
Métis Business Association,
created to support Red River
Métis entrepreneurs**



Visit us at rrmbdc.ca | 204-589-0772 | rrmbdc@mmf.mb.ca



MMF ECONOMIC DEVELOPMENT PORTFOLIO

The Economic Development programs & services offered to Red River Métis Citizens are made possible through the economic development initiatives under the leadership of President Chartrand as Minister of Economic Development of the Manitoba Métis Federation.